

Patchmaster



PM 100 Veneer Patching System

Dynamic Veneer Technology



Plytec Oy is a technology company for plywood industries. Plytec specializes in improving productivity through advanced veneer patching and scarf jointing solutions.

Every Patch Earns You Money

Modern plywood industry faces a dilemma: how to make perfect product out of an imperfect raw material? Wood will always have defects, and transition to cultivated wood and smaller log diameters increases this problem considerably. Plytec's solution is Patchmaster, the most advanced veneer patching system.

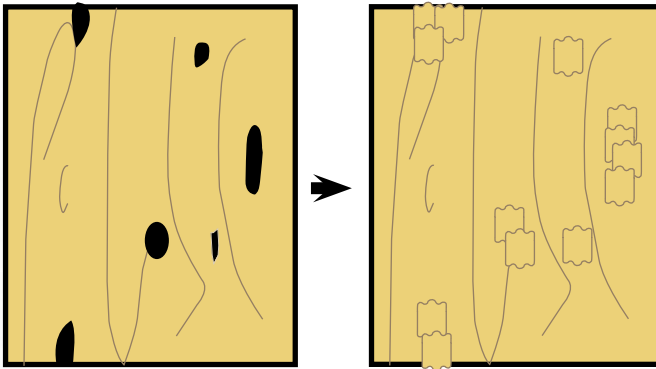
Patched veneer is cost saving and ideal replacement for composed core veneer. Patched veneer matches the technical qualities of totally sound face quality veneer. Simply: Patching lowers costs and improves profitability.



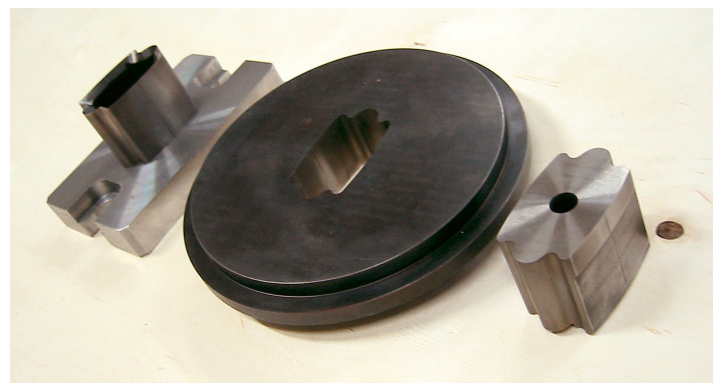
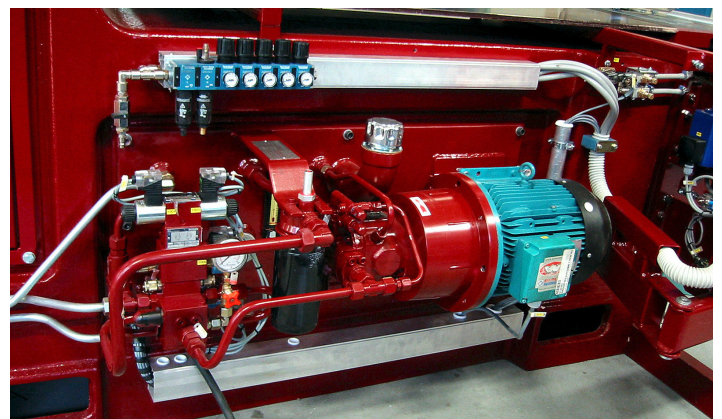
- P** Increase product value through upgrading veneer to higher face quality
- P** Cost savings from improved raw material yield compared to clipping and composing
- P** Produce top quality using difficult species such as rubber wood
- P** Save labour: one operator handles Patchmaster system
- P** Lower variance in veneer quality enables productivity in further usage such as overlaying

Larger patches for bigger defects

Butterfly-shape patches can be considerably larger than conventional oval-style patches. This is due to the butterfly's 25% larger contact area which provides strong adherence to surrounding veneer. Also open defects can be patched.



Four standard sizes: 40x70 mm, 60x100 mm, 80x120 mm and 100x140 mm.
Other shapes available as agreed.

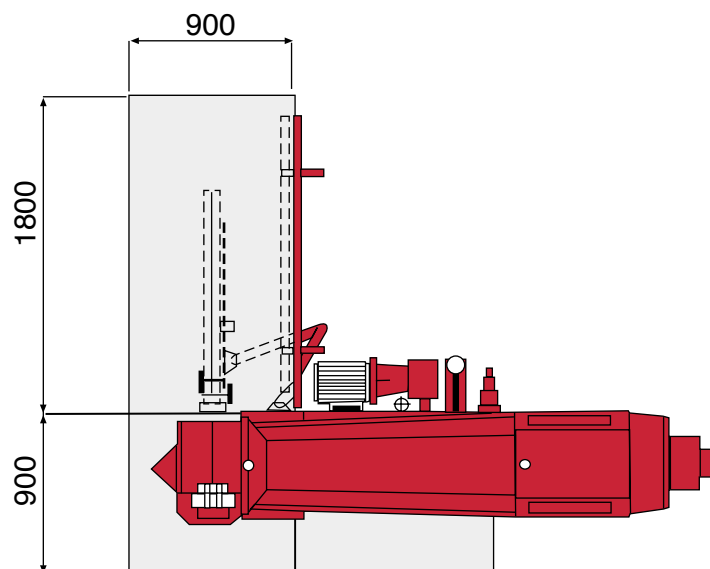
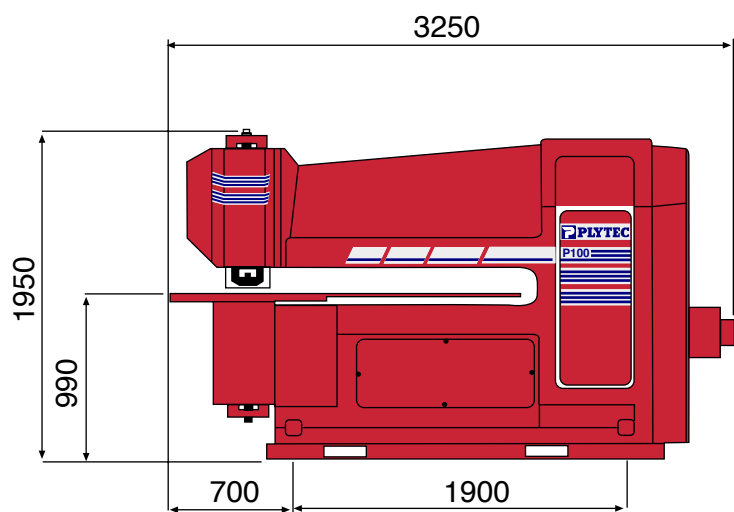
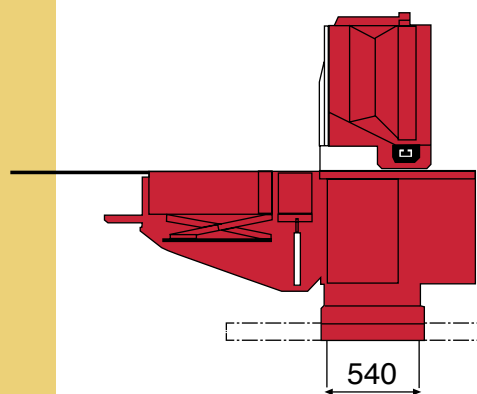


Reliability in design

Patchmaster PM 100 is developed for demanding production environment, where reliability is top priority. Selected components and robust hydraulic drive ensure almost maintenance free operation. Sturdy construction guarantees accurate operation and rapid installation as no machine foundation is needed.

Technical data

Maximum working depth	1650 mm
Veneer thickness range	1,0-4,5 mm
Patching strip width	55-115 mm
Maximum tool stroke rate	60 per minute
Pneumatic pressure	0,6 MPa
Machine dimensions (length, width, table height)	3250x2700x990 mm
Rated power	7,5 kW
Weight	4500 kg



www.plytec.fi



Plytec Oy

Laakerikatu 14
FIN-15700 Lahti, Finland
Tel. +358 3 877 340
Fax +358 3 877 3410
E-mail: plytec@plytec.fi
www.plytec.fi

Plytec Far East Pte.Ltd.

Block 620, #12-32
Choa Chu Kang St 62
SINGAPORE 680620
Tel. +65 6468 3009
Fax +65 6468 7870
E-mail: plytece@singnet.com.sg